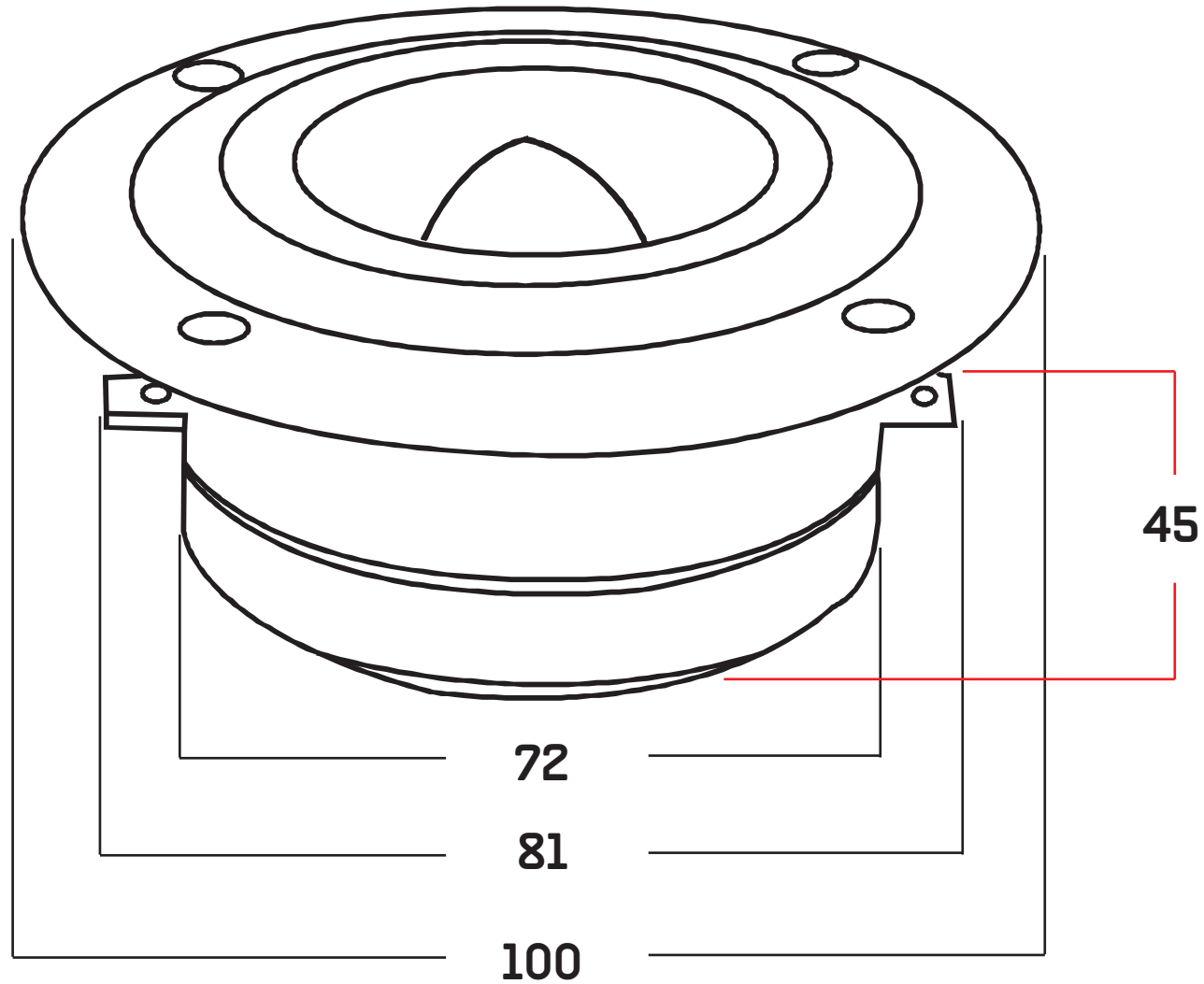




SWEET LIKE DANISH

HNTT - 3.83" TITANIUM BULLET TWEETER



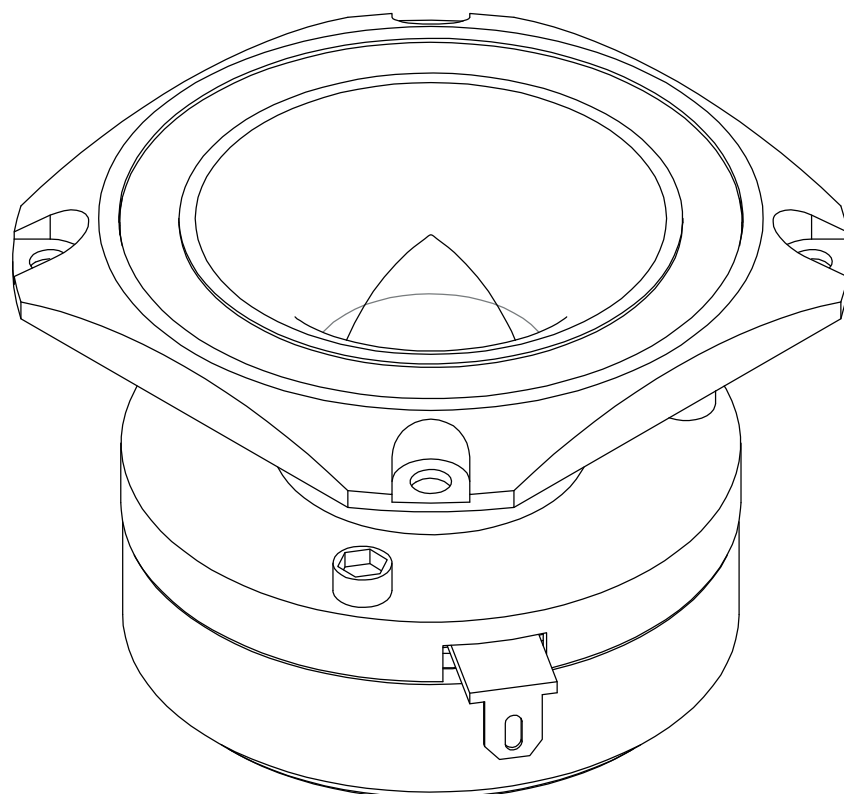
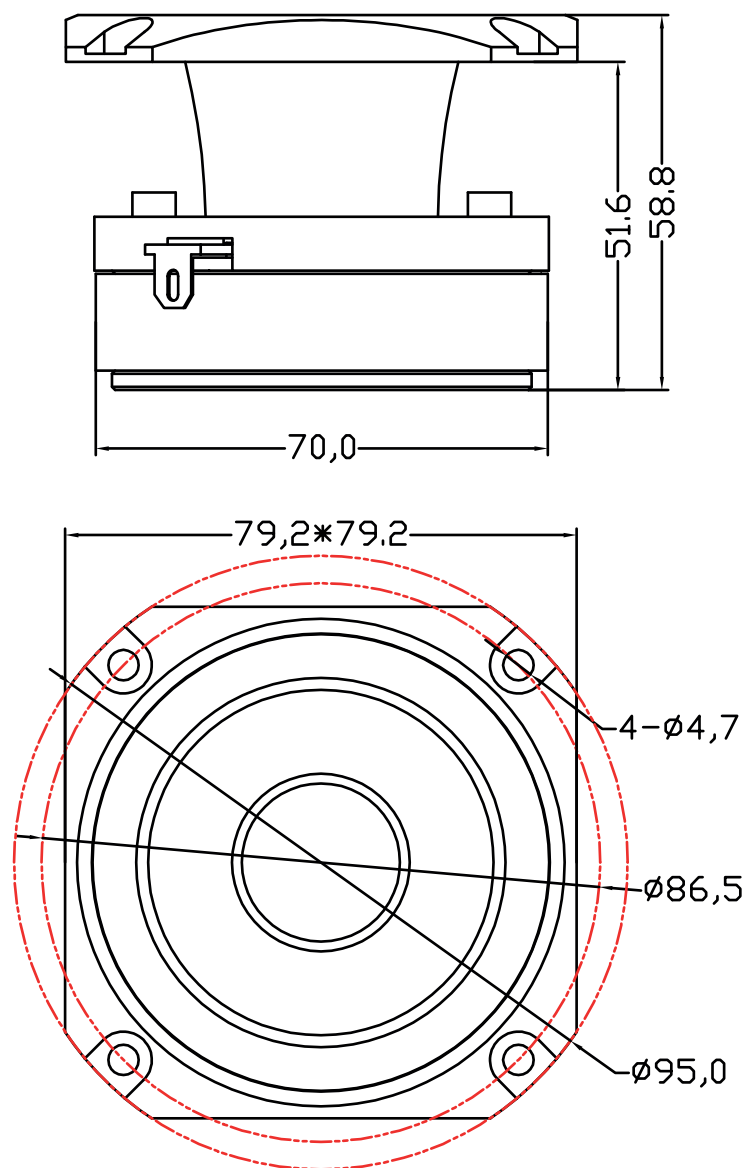
FREQ. RESPONSE:	3 KHZ-20 KHZ
IMPEDANCE:	4 OHM
SPL:	102 DB
MAGNET STRUCTURE:	5.4 OZ
POWER HANDLING:	30 WATTS
CROSSOVER POINT:	4 KHZ / 12 DB
DIAPHRAGM:	1" TITANIUM

It is essential that our speakers are given time to allow the suspension to soften up. Depending on use, this may take several weeks. While this process is undergoing, it is not recommended to apply full amplification power according to the speakers specs. Once the moving parts have been broken in, the performance of your speaker will increase and final ts/p will settle. Abuse of the unit is NOT covered by warranty. The warranty does not cover (1) Speakers that have been used for spl purpose in competitions, (2) Damage caused by amplifier clipping or distortion, (3) Exposure to water, oil, solvent & excessive temperatures +/-, (4) Cost of shipping to / from authorized service center.



SWEET LIKE DANISH

HNT1 - 3.15" TITANIUM BULLET TWEETER



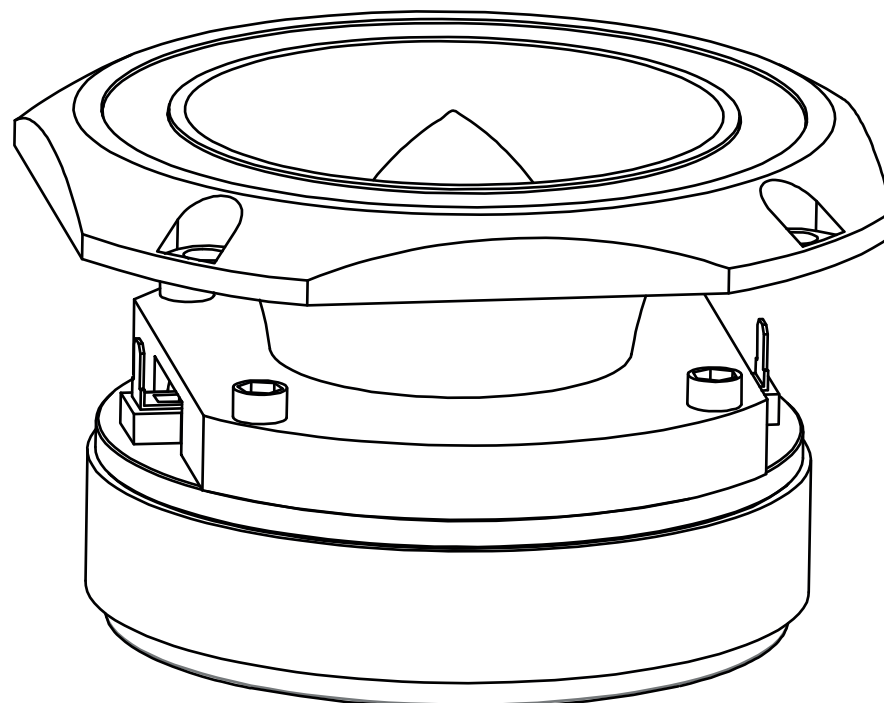
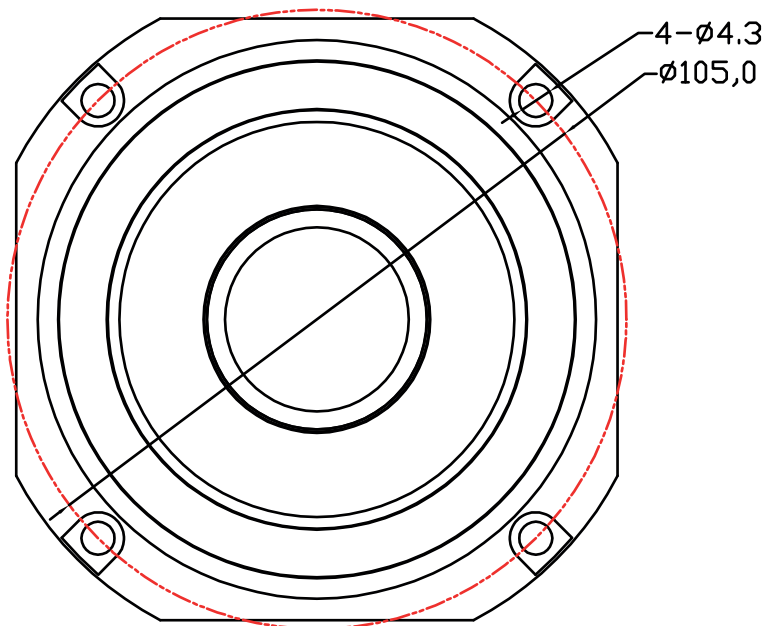
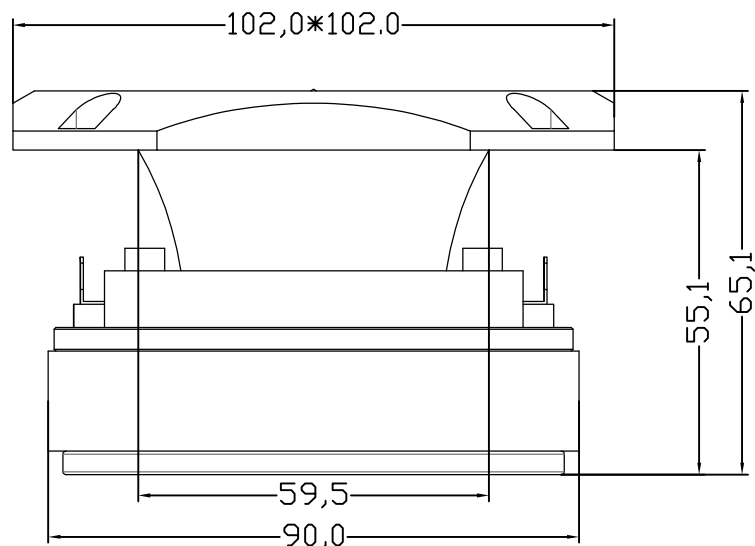
FREQ. RESPONSE:	3 KHZ-22 KHZ
IMPEDANCE:	4 OHM
SPL:	103 DB
MAGNET STRUCTURE:	5.4 OZ
POWER HANDLING:	30 WATTS
CROSSOVER POINT:	4.5 KHZ / 12 DB
DIAPHRAGM:	1" TITANIUM

It is essential that our speakers are given time to allow the suspension to soften up. Depending on use, this may take several weeks. While this process is undergoing, it is not recommended to apply full amplification power according to the speakers specs. Once the moving parts have been broken in, the performance of your speaker will increase and final ts/p will settle. Abuse of the unit is NOT covered by warranty. The warranty does not cover (1) Speakers that have been used for spl purpose in competitions, (2) Damage caused by amplifier clipping or distortion, (3) Exposure to water, oil, solvent & excessive temperatures +/-, (4) Cost of shipping to / from authorized service center.



SWEET LIKE DANISH

HNT4 - 4" TITANIUM BULLET TWEETER



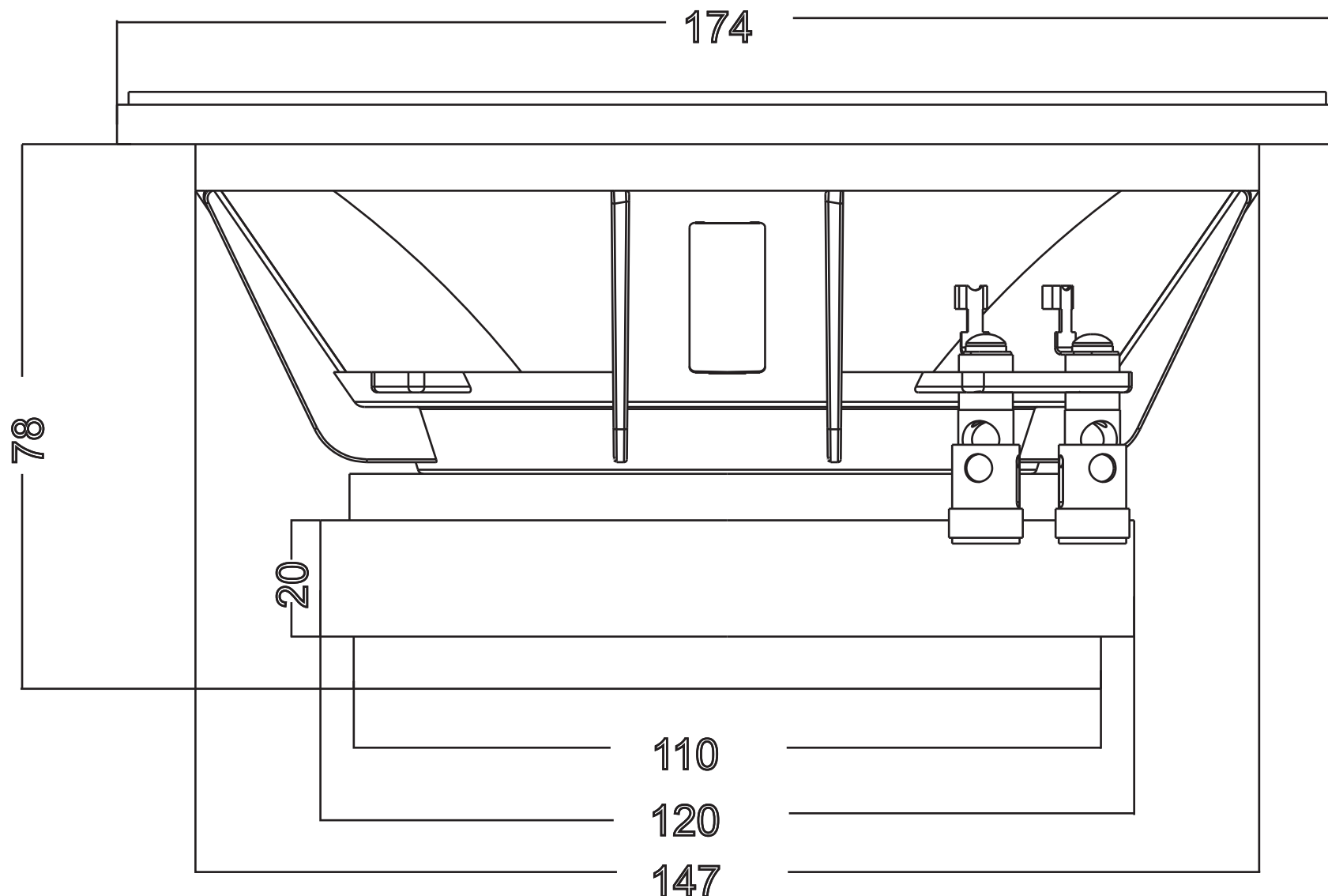
FREQ. RESPONSE:	3 KHZ-22 KHZ
IMPEDANCE:	4 OHM
SPL:	105 DB
MAGNET STRUCTURE:	10 OZ
POWER HANDLING:	50 WATTS
CROSSOVER POINT:	5 KHZ / 12 DB
DIAPHRAGM:	1.5" TITANIUM

It is essential that our speakers are given time to allow the suspension to soften up. Depending on use, this may take several weeks. While this process is undergoing, it is not recommended to apply full amplification power according to the speakers specs. Once the moving parts have been broken in, the performance of your speaker will increase and final ts/p will settle. Abuse of the unit is NOT covered by warranty. The warranty does not cover (1) Speakers that have been used for spl purpose in competitions, (2) Damage caused by amplifier clipping or distortion, (3) Exposure to water, oil, solvent & excessive temperatures +/-, (4) Cost of shipping to / from authorized service center.



SWEET LIKE DANISH

HNSP - 6.5" SQL MIDRANGE SPEAKER



FREQ. RESPONSE: 135HZ - 6KHZ
IMPEDANCE: 4 OHM
FS: 133HZ
SPL: 95DB
MAGNET: 30 OZ
POWER: 150 W AES
VOICE COIL: 1.5"
CONE MATERIAL: PAPER
SURROUND: CLOTH

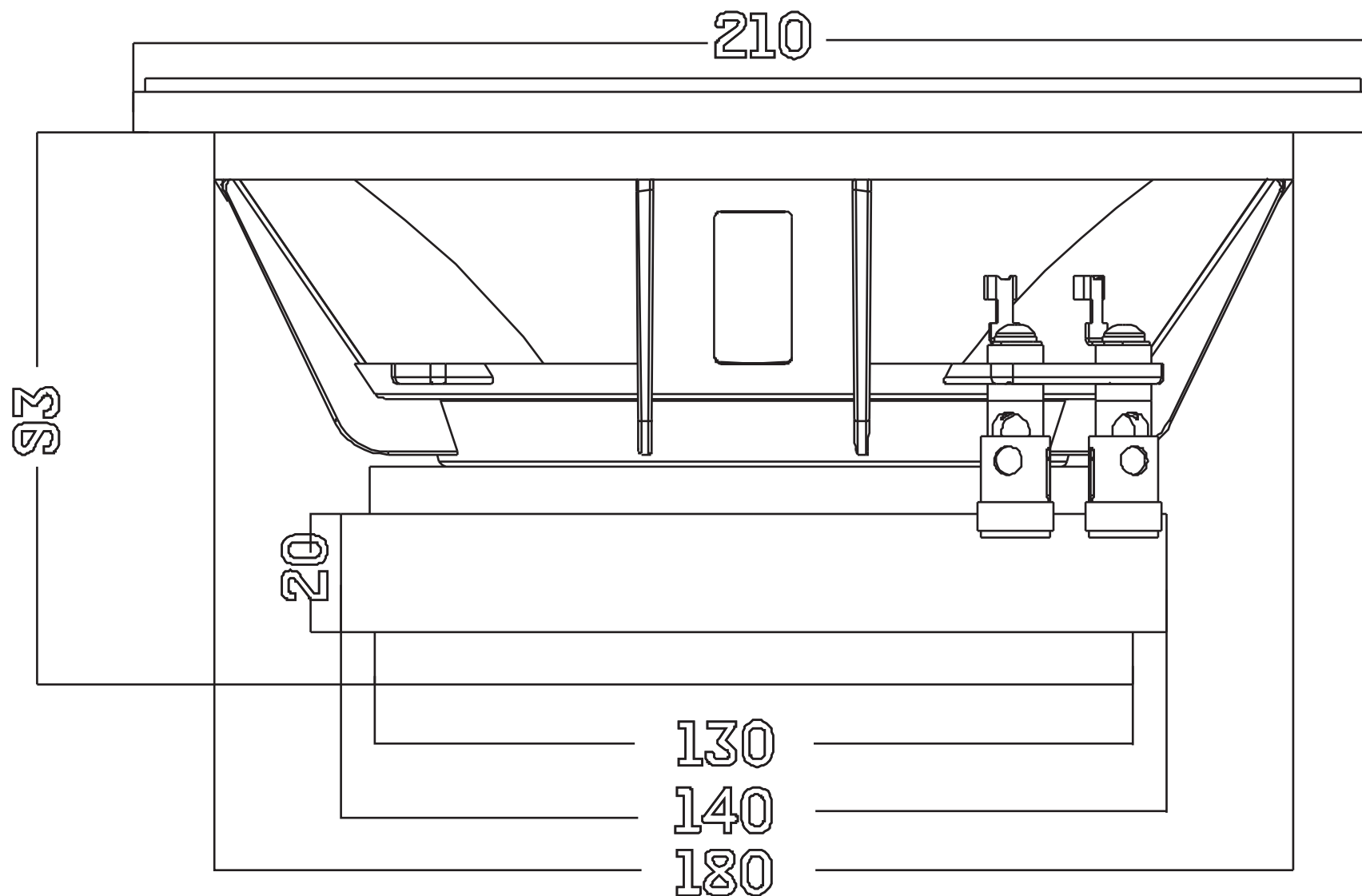
* **NOMINAL DIAMETER(INS):** 6.5(IN)
* **NOMINAL IMPEDANCE(OHM):** 4(OHM)
* **SENSITIVITY(DB,1W/1M):** 95DB
* **FREQUENCY RANGE(HZ):** 135HZ-6KHZ
* **FS(HZ):** 133HZ
* **QES:** 0.54
* **QMS:** 5.66
* **QTS:** 0.49
* **VAS:** 5.3 (LTR)
* **SD(CM2):** 0.13
* **BL(N/A):** 5.8T
* **CMS(CM/N):** 20.5
* **LE@1KHZ(MH):** 111.8

It is essential that our speakers are given time to allow the suspension to soften up. Depending on use, this may take several weeks. While this process is undergoing, it is not recommended to apply full amplification power according to the speakers specs. Once the moving parts have been broken in, the performance of your speaker will increase and final ts/p will settle. Abuse of the unit is NOT covered by warranty. The warranty does not cover (1) Speakers that have been used for spl purpose in competitions, (2) Damage caused by amplifier clipping or distortion, (3) Exposure to water, oil, solvent & excessive temperatures +/-, (4) Cost of shipping to / from authorized service center.



SWEET LIKE DANISH

HN8P - 8" SQL MIDRANGE SPEAKER



FREQ. RESPONSE: 110-6KHZ
IMPEDANCE: 4 OHM
FS: 105HZ
SPL: 96DB
MAGNET: 40 OZ
POWER: 200 W AES
VOICE COIL: 2"
CONE MATERIAL: PAPER
SURROUND: CLOTH

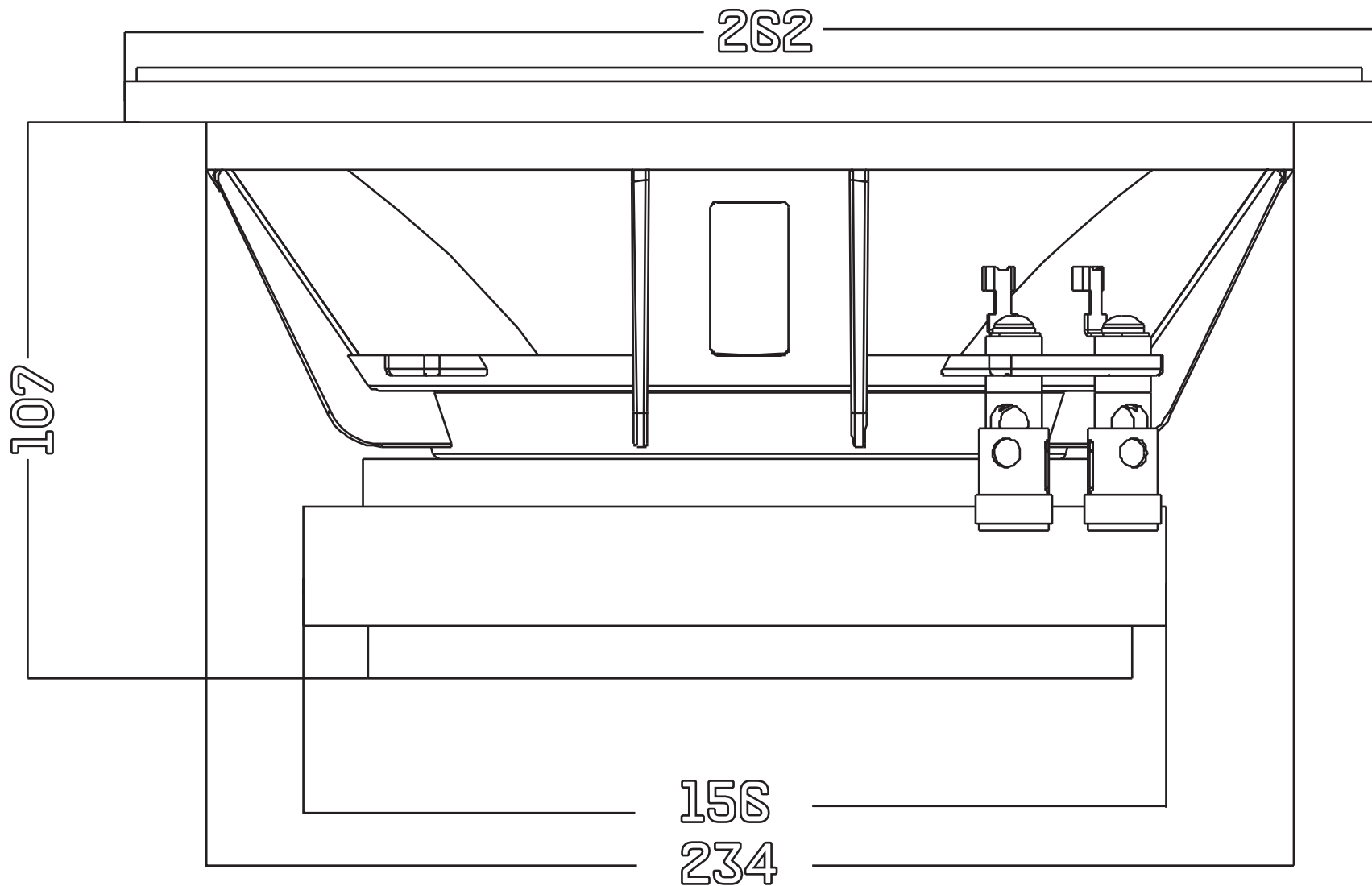
* **NOMINAL DIAMETER(INS):** 8(IN)
* **NOMINAL IMPEDANCE(OHM):** 4(OHM)
* **SENSITIVITY(DB,1W/1M):** 96DB
* **FREQUENCY RANGE(HZ):** 110HZ-6KHZ
* **FS(HZ):** 105HZ
* **QES:** 0.415
* **QMS:** 5.812
* **QTS:** 0.387
* **VAS(L):** 9.6 LTR
* **SD(CM2):** 0.21
* **BL(N/A):** 8.9T
* **CMS(CM/N):** 14.8
* **LE@1KHZ(MH):** 219.6

It is essential that our speakers are given time to allow the suspension to soften up. Depending on use, this may take several weeks. While this process is undergoing, it is not recommended to apply full amplification power according to the speakers specs. Once the moving parts have been broken in, the performance of your speaker will increase and final ts/p will settle. Abuse of the unit is NOT covered by warranty. The warranty does not cover (1) Speakers that have been used for spl purpose in competitions, (2) Damage caused by amplifier clipping or distortion, (3) Exposure to water, oil, solvent & excessive temperatures +/-, (4) Cost of shipping to / from authorized service center.



SWEET LIKE DANISH

HN10P - 10" SQL MIDRANGE SPEAKER



NOMINAL DIAMETER (INCH):	10"
NOMINAL IMPEDANCE:	4 OHM
SENSITIVITY (DB 1W/1M):	99 DB
FREQUENCY RANGE (HZ):	60 HZ - 5 KHZ
FS (HZ):	70 HZ
QES:	0.39
QMS:	4.03
QTS:	0.36
VAS:	32.1 L
BL:	9.3 T
MAGNET:	45 OZ
POWER:	250 W AES
VOICE COIL:	2.5"
CONE MATERIAL:	PAPER
SURROUND:	DUAL U SHAPED CLOTH

It is essential that our speakers are given time to allow the suspension to soften up. Depending on use, this may take several weeks. While this process is undergoing, it is not recommended to apply full amplification power according to the speakers specs.

Once the moving parts have been broken in, the performance of your speaker will increase and final ts/p will settle.

Abuse of the unit is NOT covered by warranty. The warranty does not cover (1) Speakers that have been used for spl purpose in competitions, (2) Damage caused by amplifier clipping or distortion, (3) Exposure to water, oil, solvent & excessive temperatures +/- (4) Cost of shipping to / from authorized service center.