

# B<sup>2</sup> audio

MODEL: HNC6.1

PRODUCT ID:HNC6115



## HNC6.1 / 5.1

### OWNER'S MANUAL



CE

## INTRODUCTION

We thank you for purchasing the HNC6.1/ HNC5.1 speaker system. Your decision to be part of something different is what we strive for. Our products reflect who we are, going to the extent to deliver you our finest comes natural.

The HNC6.1 component system is engineered to achieve a balanced sound reproduction. Whether it is SQL or entirely SQ, the sound reproduced will appear natural.

We refer to it as SQL audiophile products, optimizing every aspect of the speaker to achieve better efficiency, minimizing distortion, enhancing the frequency response & creating audio reproduction based on Sound Quality for the listener.

For continuous news & updates feel free to visit *B<sup>2</sup>* at [www.b2audio.com](http://www.b2audio.com) and on social media [www.facebook.com/sweetlikedanish](https://www.facebook.com/sweetlikedanish) - [www.youtube.com/b2audio](https://www.youtube.com/b2audio) [www.instagram.com/b2\\_audio](https://www.instagram.com/b2_audio) - [www.twitter.com/b2\\_audio](https://www.twitter.com/b2_audio)

\*It is essential that the HNC 6.1 speaker system is given time to allow the suspension to soften up. Also referred to as "Burn In". Depending on use, this may take several weeks. While this process is undergoing, it is not recommended to apply full amplification power according to the speakers specs. Once the "Burn In" has been done, the audio reproduction of the HNC6.1 will appear more natural & balanced.



### Better Bass

Better Bass is our philosophy of adding something extra without deterring the sound. Keep in mind that continuous exposure to SPL above 100 dB can seriously damage your hearing. Today's high power auto sound systems can easily produce SPL over 140 dB. Enjoy your music with sense.

## TABLE OF CONTENTS

DESIGN FEATURES	3
THIELE SMALL DATA	3
INSTALLATION	4



## DESIGN FEATURES

# HNC6.1 / HNC5.1

## SQL Component Speaker System

Midrange:	6.5" / 5.25" impp cone midrange speaker
Tweeter:	1" Silk dome tweeter
Frequency Response:	60 Hz ~ 20 KHz
Frequency Response HNC5.1:	65 Hz ~ 20 KHz
Crossover:	2 way passive crossover
Crossover Point:	3.5 KHz
Crossover Slope:	12 dB / Octave
Attenuation Tweeter:	0 dB , - 3 dB, + 3 dB

### Thiele Small data:

	HNC6.1	HNC5.1	Midrange	HNC6.1	HNC5.1
Fs:	59.7 Hz	64.8 Hz	Re:	3.6 $\Omega$	3.6 $\Omega$
Qms:	4.494	3.571	Z nom:	4 $\Omega$	4 $\Omega$
Qes:	0.402	0.446	Voice coil:	1"	1"
Qts:	0.369	0.396	Rms:	2.77	1.4
Vas:	10.87 L	5.226 L	Efficiency:	0.565 %	0.361 %
Cms:	460 $\mu\text{m}/\text{N}$	490 $\mu\text{m}/\text{N}$	BL:	7.18 TM	6.104 TM
Mms:	15.24 g	11.08 g	SPL:	90.3 dB	87.6 dB
Power handling:	100 w	100 w			

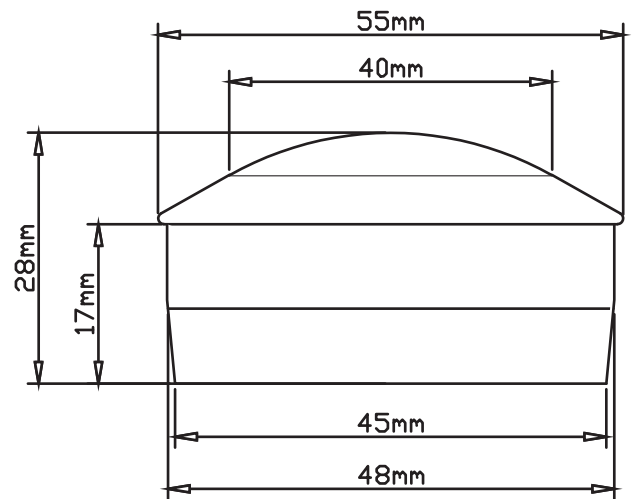
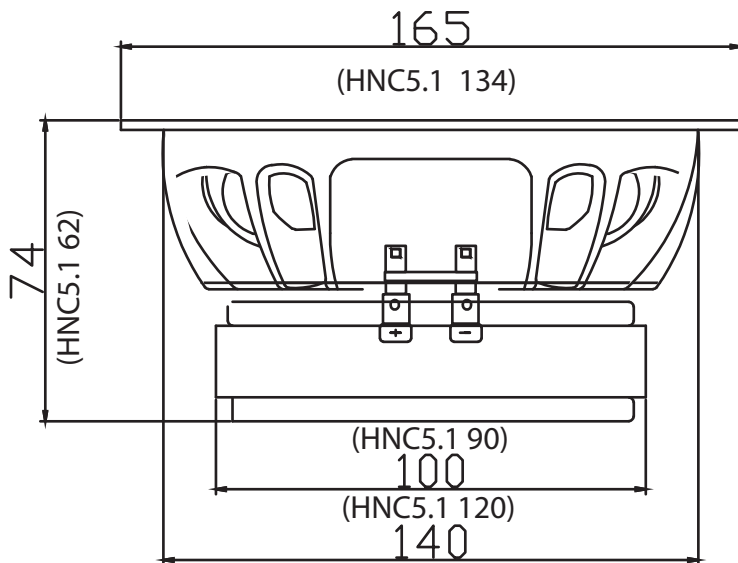
### Tweeter data:

Fs:	1.3 KHz
Re:	3.6 $\Omega$
Z nom:	4 $\Omega$
SPL:	90 dB (1w / 1 m)
Voice coil:	1"
Wire material:	Aluminum, copper layered.
Power handling:	10 w

*B<sup>2</sup> audio*

## DIMENSIONAL DATA

### HNC5.1/5.1



### Installation

Prior to installation, ensure a proper location for the speaker system.

Due to the physical dimensions of the cabin, it is wise to test various points of placements if possible.

If oem position is chosen, a good tip is to reinforce the mounting with a mdf ring and seal off leakage from that position. This will enhance mid bass response as well as optimizing overall performance.

Do also try with slightly angling the midrange speaker to "raise" the sound.

The tweeters can preferably be mounted in a-pillars or placed close to the windscreen, mirroring of that and reflecting the sound towards the best audible position.

The crossover has a 3 step attenuation for the tweeter, which can be adjusted in levels of 3 dB from + 3 dB, 0 , -3 dB. Since it will take some time for the "Burn in" to settle, it is a good idea to have the crossovers easily accessible before doing the final install.

*B<sup>2</sup> audio*

# B2

## LIMITED WARRANTY INFORMATION

B2 audio offers a limited warranty under the following terms:

The product is to be free of defects in material & workmanship under normal use for a period of 1 year from the date of the original purchase, when installed by an authorized dealer. Items not installed by authorized dealers will be warrantied for 30 days from the original purchase. Original sales receipts must be accompanied with all returns. The warranty applies to the original purchaser of the product & it being sold by authorized B2 audio dealers.

The warranty does not cover:

1. Damage caused by accident, abuse, misuse, improper operation, water / solvents & shipping.
2. Product modification, neglect, failure to follow installation instructions & misrepresentation by the seller.
3. Products used for competition purposes or are of such a character
4. Any product that has been opened.
5. Products that has had the serial number defaced, altered or removed.
6. The cost of shipping the product back for repair to an authorized repair centre & cost of return of non-defective items.

